

SBM-5 SOUNDPROOFING MAT - Barrier mat for use on walls and floors

Key Benefits

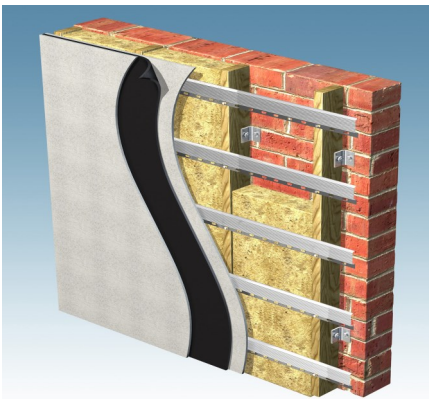
- Ideal to be used as a de-coupler between plasterboard
- Blocks airborne sound as well as a sheet of lead
- Significantly increases the mass of any panel or board
- Nom. 2mm thick
- Easy to cut and install
- Minimum insulation value of 24db
- Supplied on a roll 1.2m x 1.2m x 2mm thick

Description

A thin, effective mineral loaded soundproofing mat designed to reduce airborne noise transmission through stud partitions, and timber joisted floors.

SBM5 is a heavy layer mineral loaded soundproofing mat nominally 2mm thick with excellent sound insulating qualities which will give significant sound loss improvements to lightweight structures when used as a barrier layer.

It is equal to lead of the same mass in effectiveness and acts as a thin de-coupling sound barrier in stud walls and timber floors. If you are suffering from a small amount of noise, omitting loud music and bass, you may wish to look at our M20 wall panel instead.



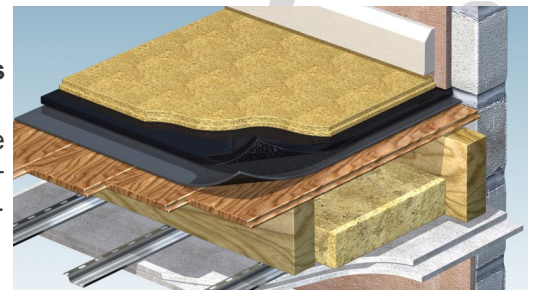
If you are experiencing loud noise such as music, we recommend using the soundproofing mats with our resilient bars. The soundproofing mat is sandwiched between two layers of plasterboard which in turn are screwed into the bars.

Alternatively you can stick them directly to a wall before adding further plasterboard. This will help reduce the sound but ideally you would use one of the systems above for a better result.

Normally fixed to original panels of metal, wood and plasterboard etc, this acoustic mat is particularly effective at improving the sound insulation value of timber floors and stud partitions.

Use on Floors

Two to three layers glued onto timber floors will dramatically reduce airborne noise penetrating the floor from below or airborne noise you are creating transmitted downstairs. It does **not** significantly reduce any footfall or impact noise.



Special Spray Adhesive

We advise adhering the Soundproofing Mats to the floor for a better seal using our Special Web Spray Adhesive. Please ask about quantities needed when ordering.

ADDITIONAL INFORMATION AND INSTALLATION DETAIL CAN BE FOUND ON OUR WEBSITE

**Crawley Mill, Dry Lane, Witney, Oxfordshire, OX29 9TJ Tel: 0845 363 7131 Fax: 0845 363 7151
www.soundservice.co.uk**